

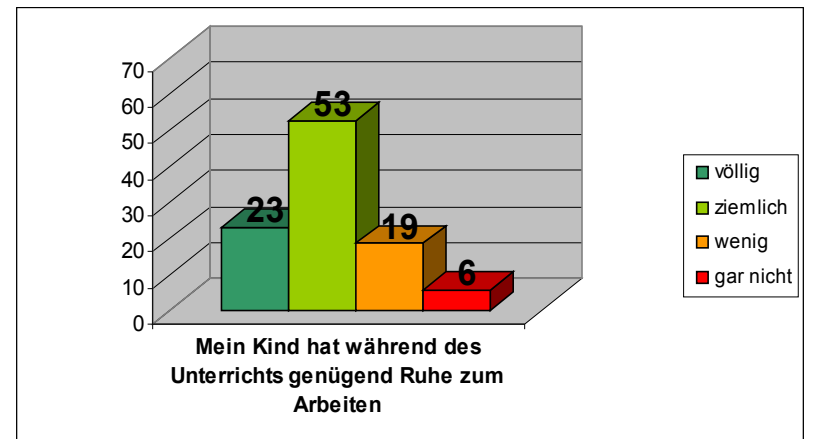
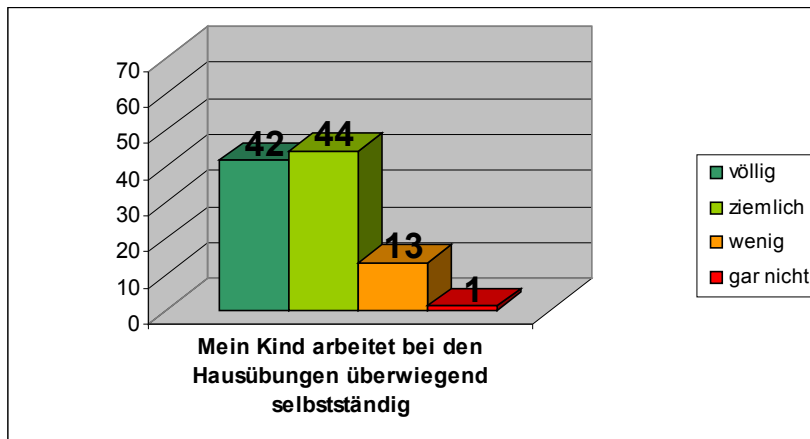
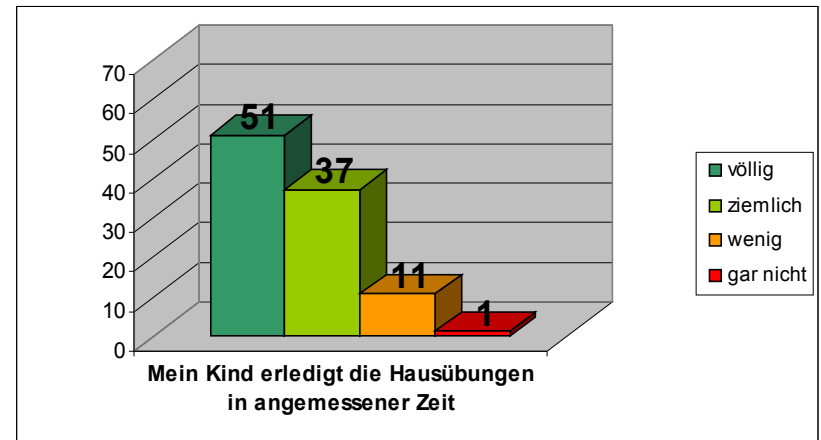
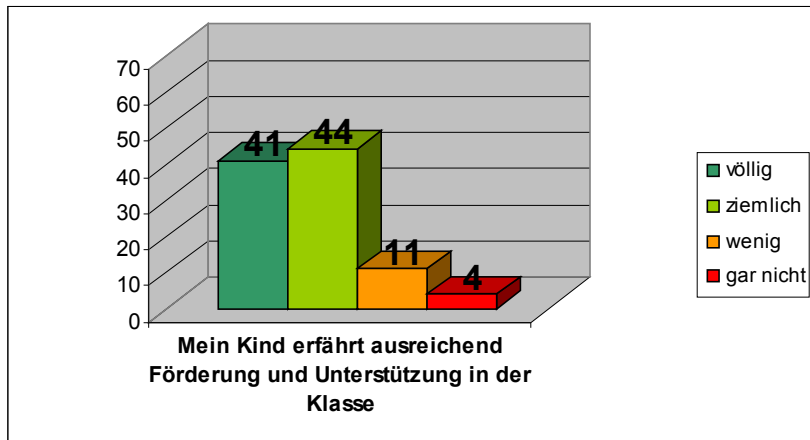
Schulevaluation 2010/11

ausgewertet von VD Claudia SAX

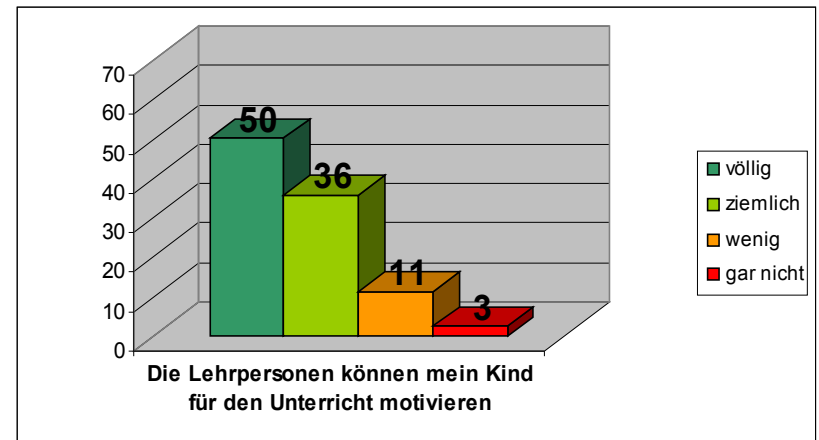
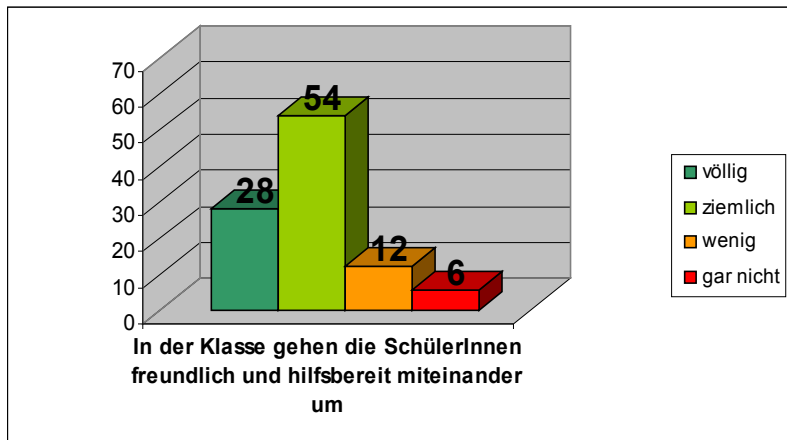
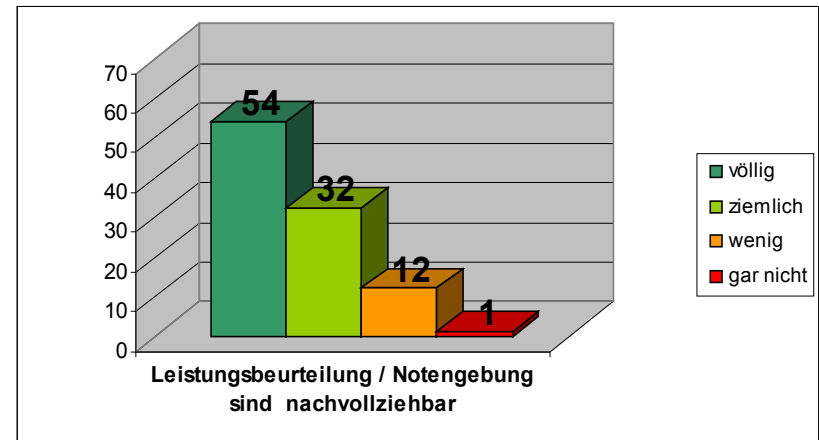
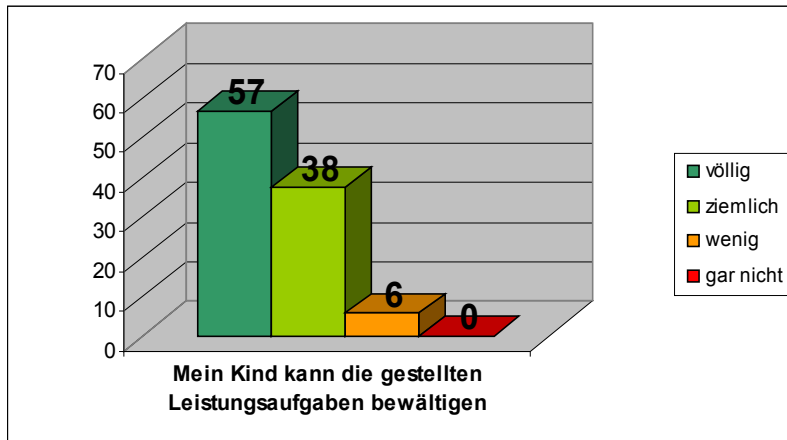
Schulevaluation 2010/11

- 219 SchülerInnen
- 160 verwertbare Fragebögen
(1,60 = 1%, d.h. 1% in der Darstellung bedeutet, dass ca. 1,5 Personen so abgestimmt haben)
- Für THS 84 verwertbare Bögen
(0,84 = 1 %, d.h. 1% in der Darstellung bedeutet, dass ca. 1 Person so abgestimmt hat)
- Es wurde die subjektive Einschätzung der Eltern abgefragt

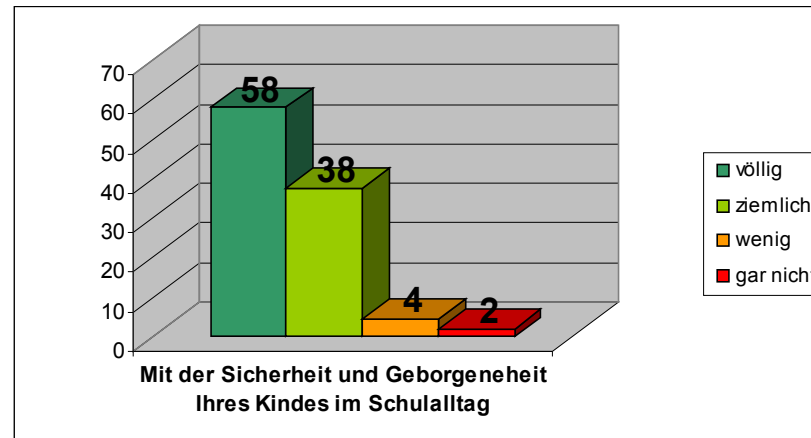
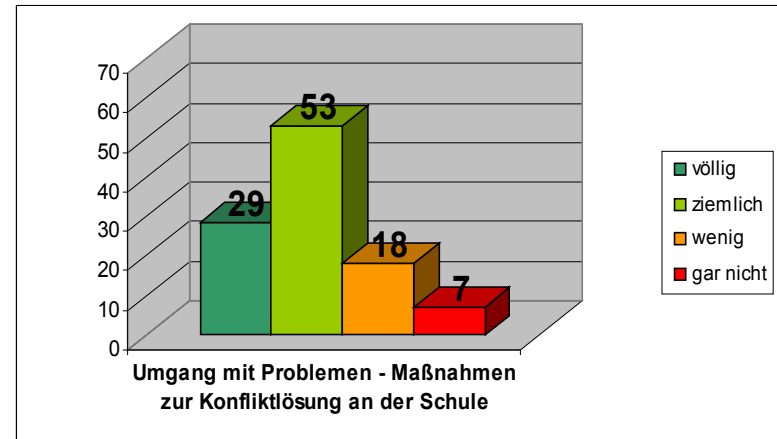
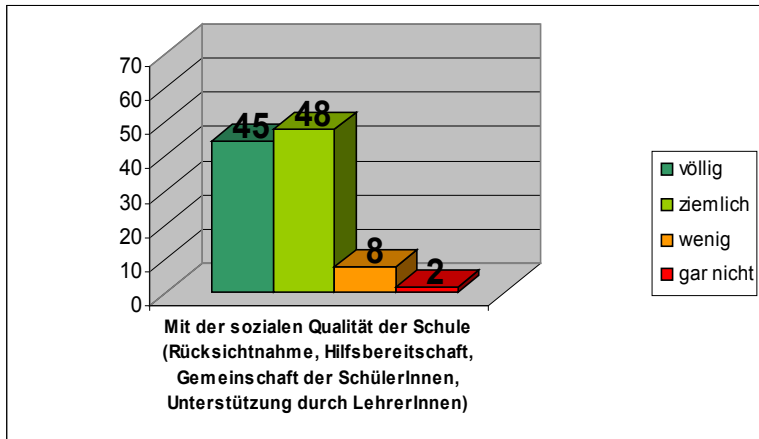
Unterrichtsqualität



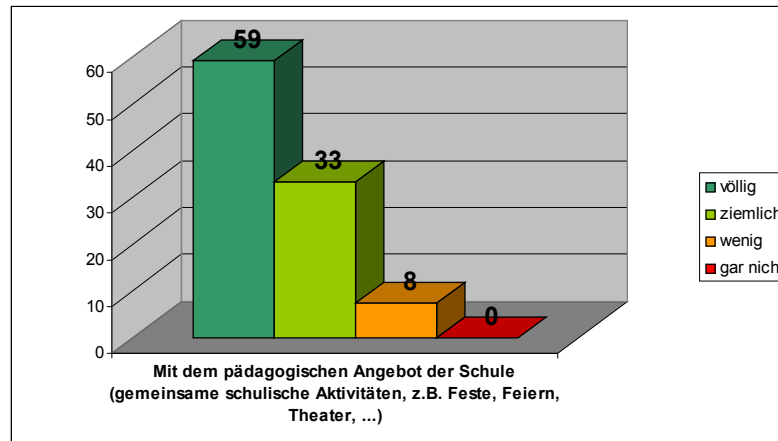
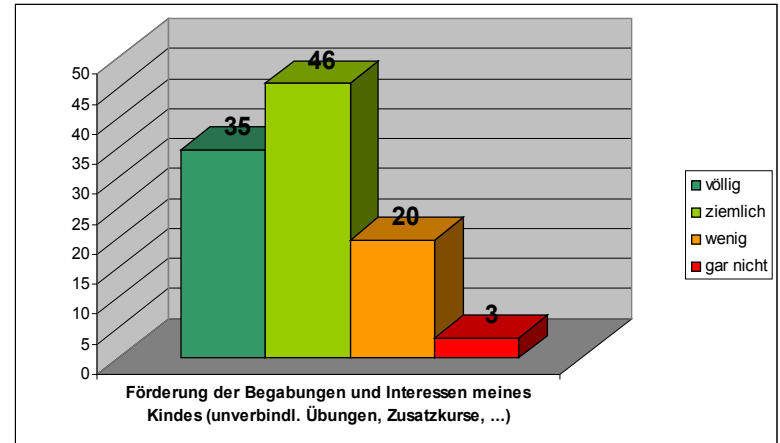
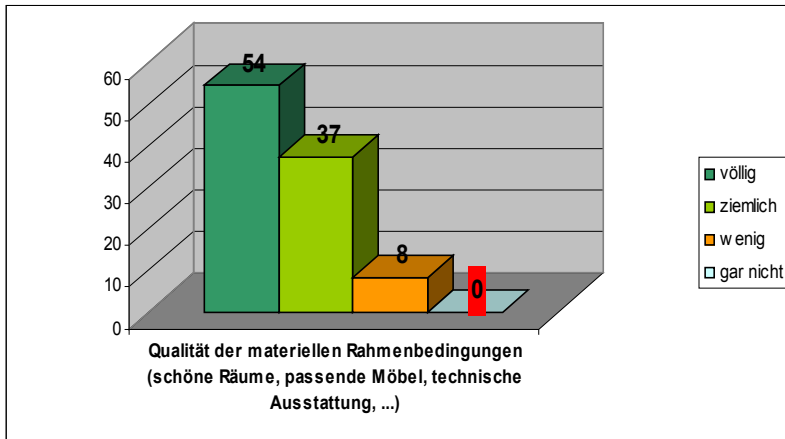
Unterrichtsqualität



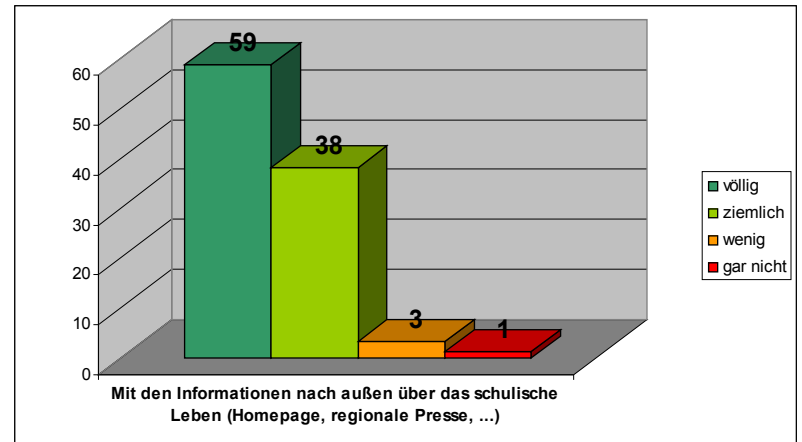
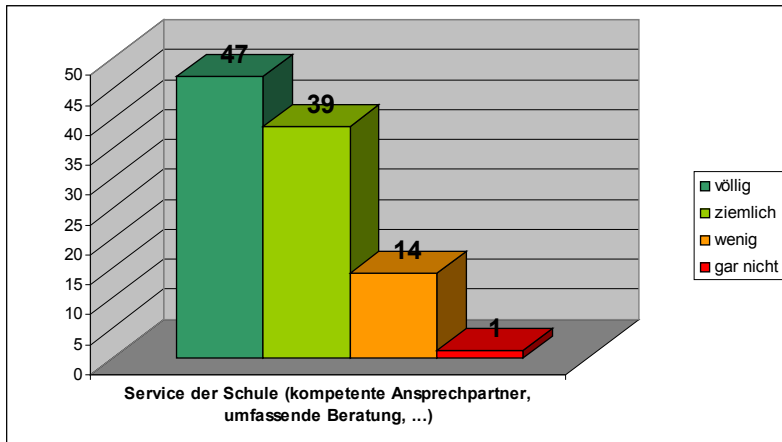
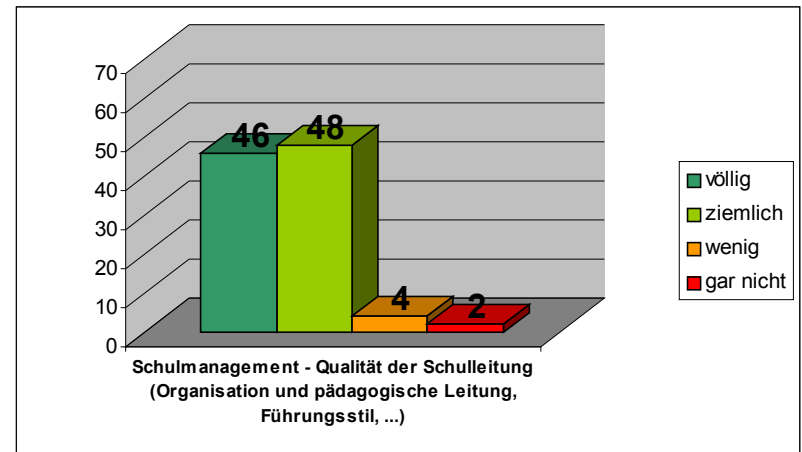
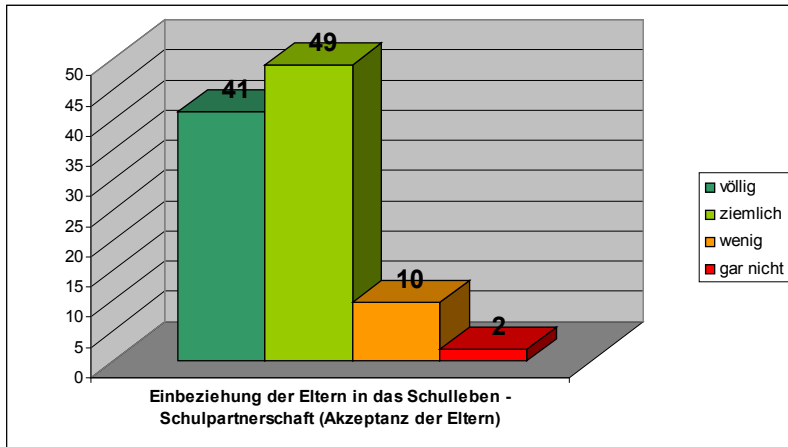
Lebensraum „Schule“



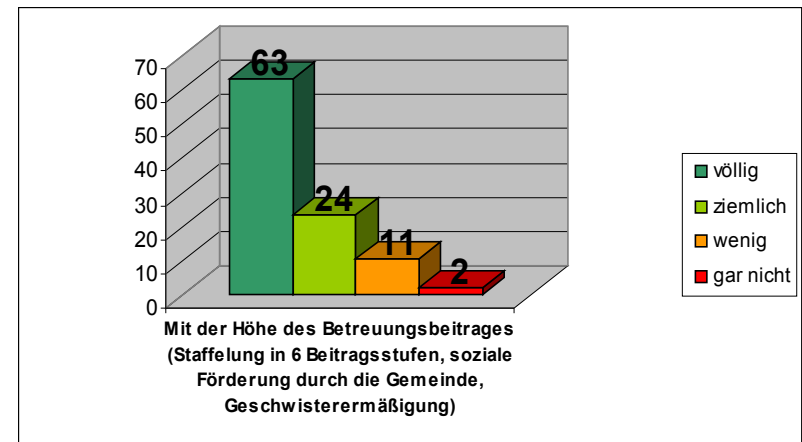
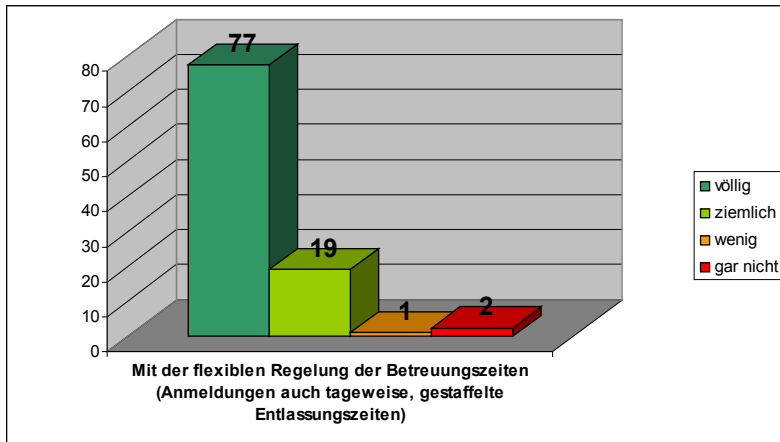
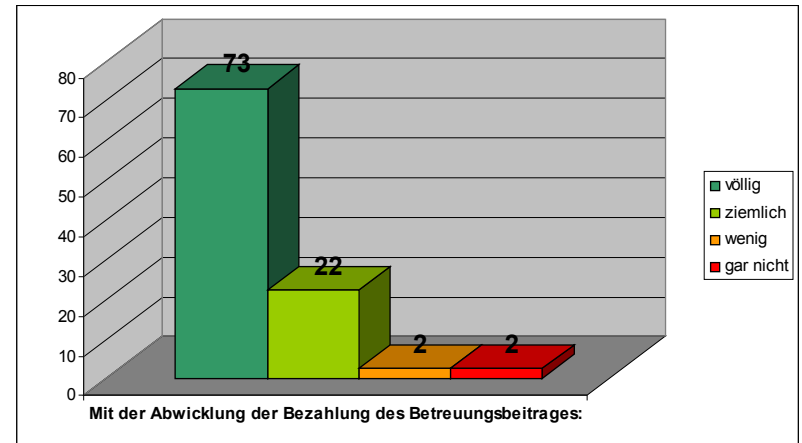
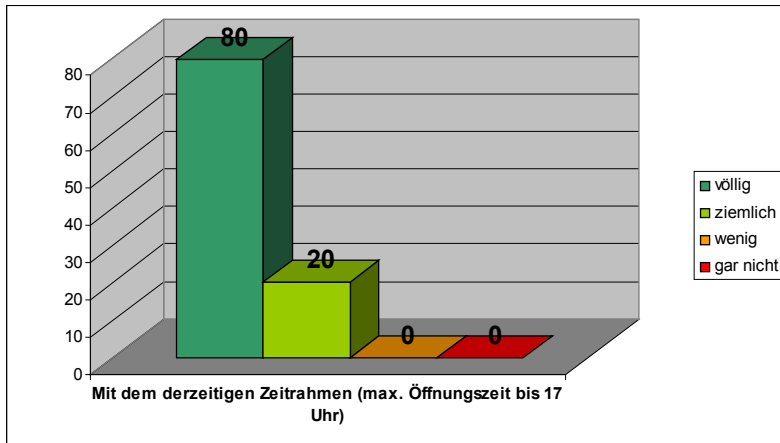
Lebensraum „Schule“



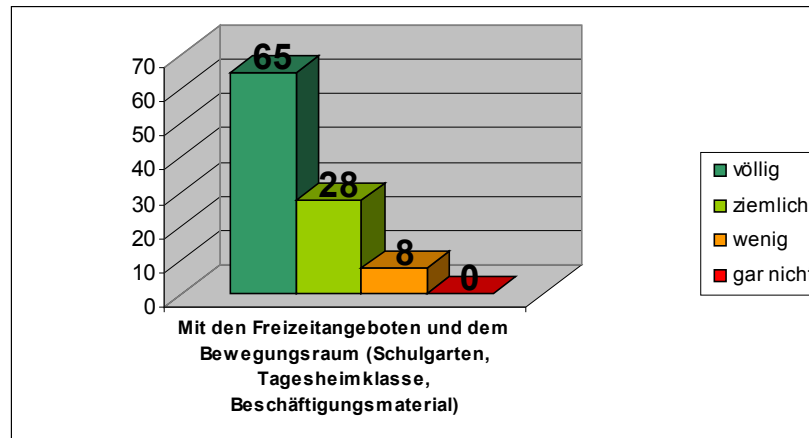
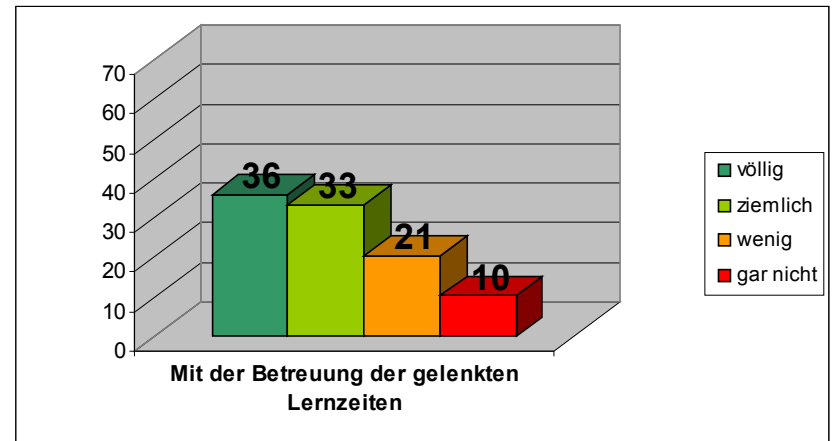
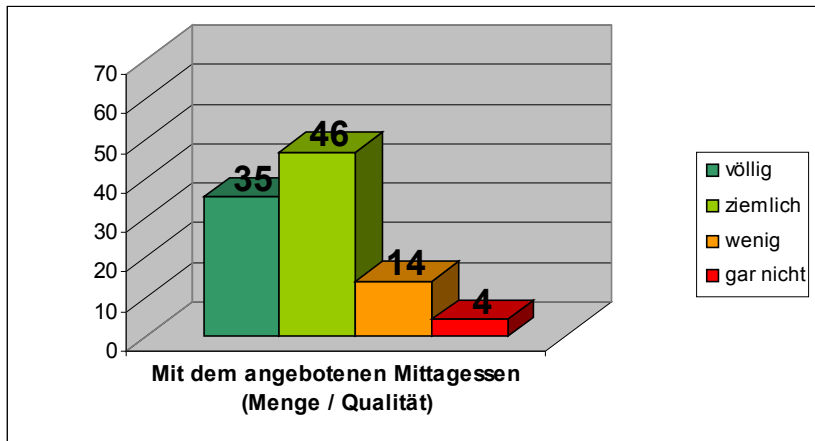
Lebensraum „Schule“



Nachmittagsbetreuung



Nachmittagsbetreuung



Zufriedenheit mit den LehrerInnen

